

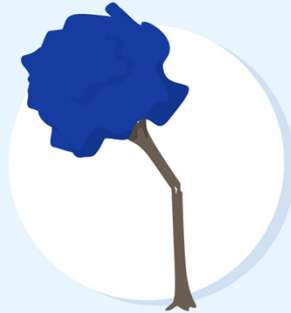
Comprehensive Auto Insurance

Comprehensive auto insurance protects your vehicle from damage not sustained from a collision.

Comprehensive auto insurance can include coverage for the following:



Vehicle theft



Falling objects



Fires



Inclement weather or natural disasters



Striking, or being struck by, an animal



Riots or vandalism



Damage to the windshield or any glass

This type of insurance typically does not include coverage for costs associated with:

Collisions

Towing

Rentals

Medical and legal expenses

Property stolen from your vehicle